

High Performance Color Coating Systems

Building
Envelope
Design
Solutions

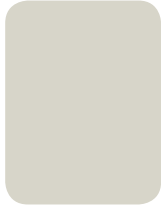


Standard Colors

Weather XL – Siliconized Modified Polyester (SMP)

WEATHER XL coating systems utilize only ceramic and inorganic pigments offering superior color stability, chalk and fade resistance as well as gloss retention.

SMP



Driftwood
SR:0.55 E:0.86 SRI:64

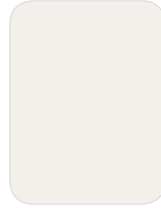


Sandstone
SR:0.49 E:0.86 SRI:56



Surrey Beige
SR:0.41 E:0.86 SRI:45

MP (Modified Polyester)



Imperial White
SR:0.62 E:0.86 SRI:74



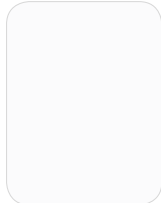
Solid Fluoropon® PVDF Colors – Kynar 500® / Hylar 5000

Fluoropon coatings are durable polyvinylidene coating system containing 70% Kynar or Hylar resins, ceramic and other inorganic pigments. This system provides a powerful chemical bond, superior resistance to ultraviolet radiation resulting in exceptional color retention, resistance to chalking and chemical degradation.

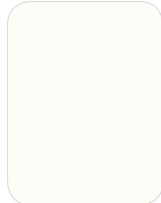
Category 1



Regal White
SR:0.70 E:0.86 SRI:85



Ascot White
SR:0.69 E:0.85 SRI:83



Bone White
SR:0.69 E:0.84 SRI:83



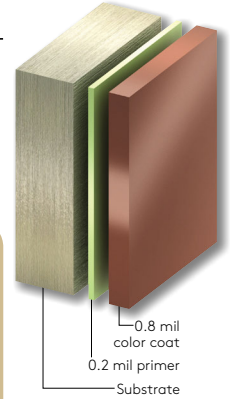
Driftwood
SR:0.45 E:0.86 SRI:50



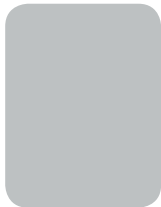
Sandstone
SR:0.61 E:0.85 SRI:72



Surrey Beige
SR:0.48 E:0.86 SRI:54



Category 2



Dove Gray
SR:0.47 E:0.86 SRI:53



Zinc Gray
SR:0.35 E:0.86 SRI:37



Rawhide
SR:0.55 E:0.85 SRI:64



Parchment
SR:0.53 E:0.85 SRI:61



Rock Tan
SR:0.62 E:0.86 SRI:74



Taupestone
SR:0.27 E:0.86 SRI:26



Spartan Bronze
SR:0.31 E:0.85 SRI:31



Redwood
SR:0.38 E:0.86 SRI:41



Slate Blue
SR:0.28 E:0.85 SRI:27

Category 3



Colonial Red
SR:0.32 E:0.86 SRI:33



Evergreen
SR:0.26 E:0.85 SRI:24



Regal Blue
SR:0.26 E:0.85 SRI:24



Tahoe Blue
SR:0.26 E:0.85 SRI:24

SR (Solar Reflectivity) This is the ability of a material to reflect solar energy back into the atmosphere. Rated on a scale from 0 to 1, where 1 is the most reflective.

E (Emissivity) Emissivity is the ability of the material to release absorbed energy back into the atmosphere. Rated on a scale from 0 to 1, where 1 is the most emissive.

SRI (Solar Reflective Index) This is used to determine compliance with LEED® requirements and is calculated according to ASTM E 1980 using values for reflectance and the materials ability to release absorbed energy (emissivity) in medium wind speed conditions. Rated on a scale from 0 to 1, where 1 is the most reflective.

Premium Colors

Mica Fluropon Classic® II PVDF Colors

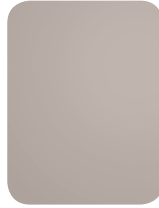
The coating system consists of a special primer and a durable color coat containing mica pearlescent flakes. Due to the orientation of aluminum/pearlescent flake pigments during application, the appearance will be directional in nature on metallic coatings.



Silversmith
SR:0.53 E:0.79 SRI:59



Zinc
SR:0.55 E:0.79 SRI:62



Champagne Pearl
SR:0.48 E:0.81 SRI:53



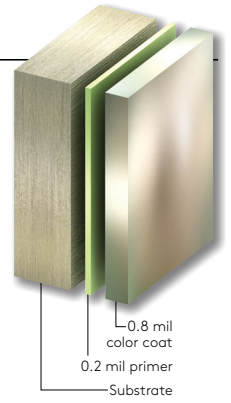
Champagne Bronze
SR:0.44 E:0.78 SRI:46



Weathered Zinc
SR:0.33 E:0.84 SRI:33



Copper Penny
SR:0.48 E:0.84 SRI:54

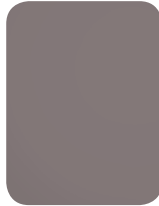


Metallic Fluropon Classic® PVDF Colors

Metallic coatings employ metal flakes in the color coat. The system uses a special primer, a 70% Kynar 500® or Hylar 5000® resin based Fluropon color coat and a clear topcoat, to provide outstanding color and gloss retention, increased abrasion resistance and added protection against atmospheric contaminants.



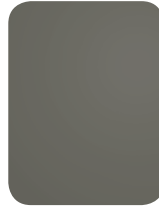
Bright Silver
SR:0.57 E:0.81 SRI:65



Rosalind Rose
SR:0.34 E:0.88 SRI:36



Champagne Gold
SR:0.51 E:0.85 SRI:58



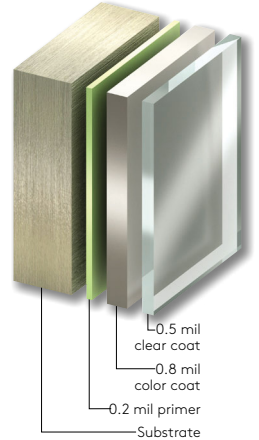
Pewter
SR:0.31 E:0.86 SRI:31



Medium Bronze
SR:0.19 E:0.85 SRI:15



Dark Bronze
SR:0.12 E:0.83 SRI:5



Granitstone®

Granitstone® Panel Colors

Granitstone® coatings have an oven-baked epoxy primer and a factory applied finish of an air-dried 100% acrylic bonder with natural silica aggregate, minimum 12 mils dry film thickness, finished to resemble sprayed stucco.

Granitstone®



Imperial White



Bone White



Sandstone



Parchment



Rawhide



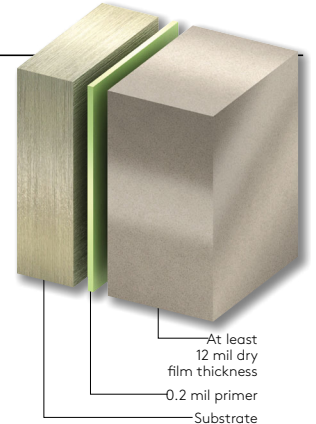
Surrey Beige



Taupestone



Dove Gray



Granitstone® Quartz



Teton Gray



Foxwood Beige



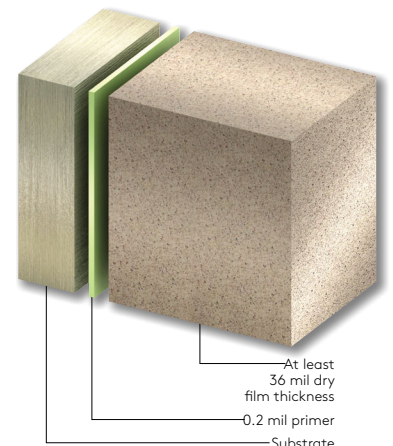
Dakota Bronze

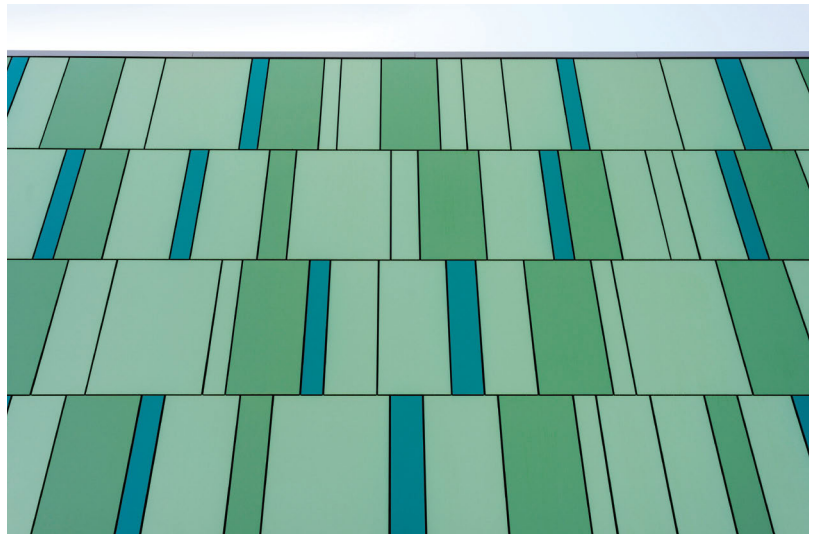
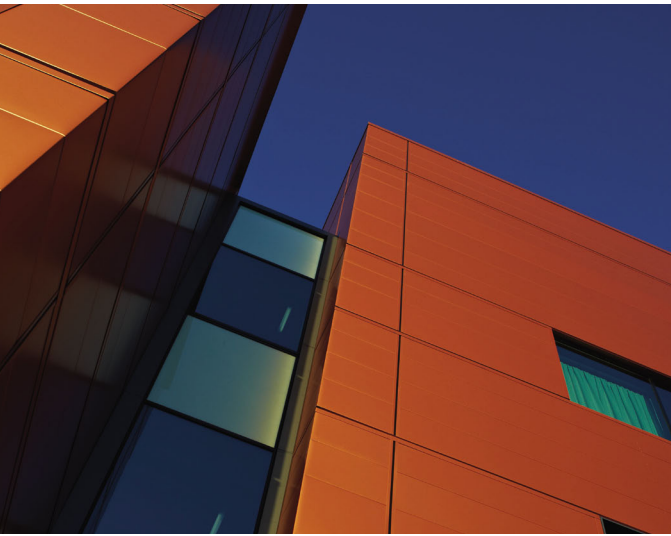


Cascade Sand



Monterey Gold





Kingspan offers a full spectrum of vibrant colors for every color scheme. The high performance coatings provide long-life protection, color and gloss retention. Custom color matching is available to meet individual building designs and creative freedom.



Kingspan USA

Deland, FL; 386-626-6789
 Modesto, CA; 209-531-9091
 Columbus, OH; 614-444-0110

Kingspan Canada

Caledon, ON; 905-951-5600
 Langley, BC; 604-607-1101



www.kingspanpanels.com